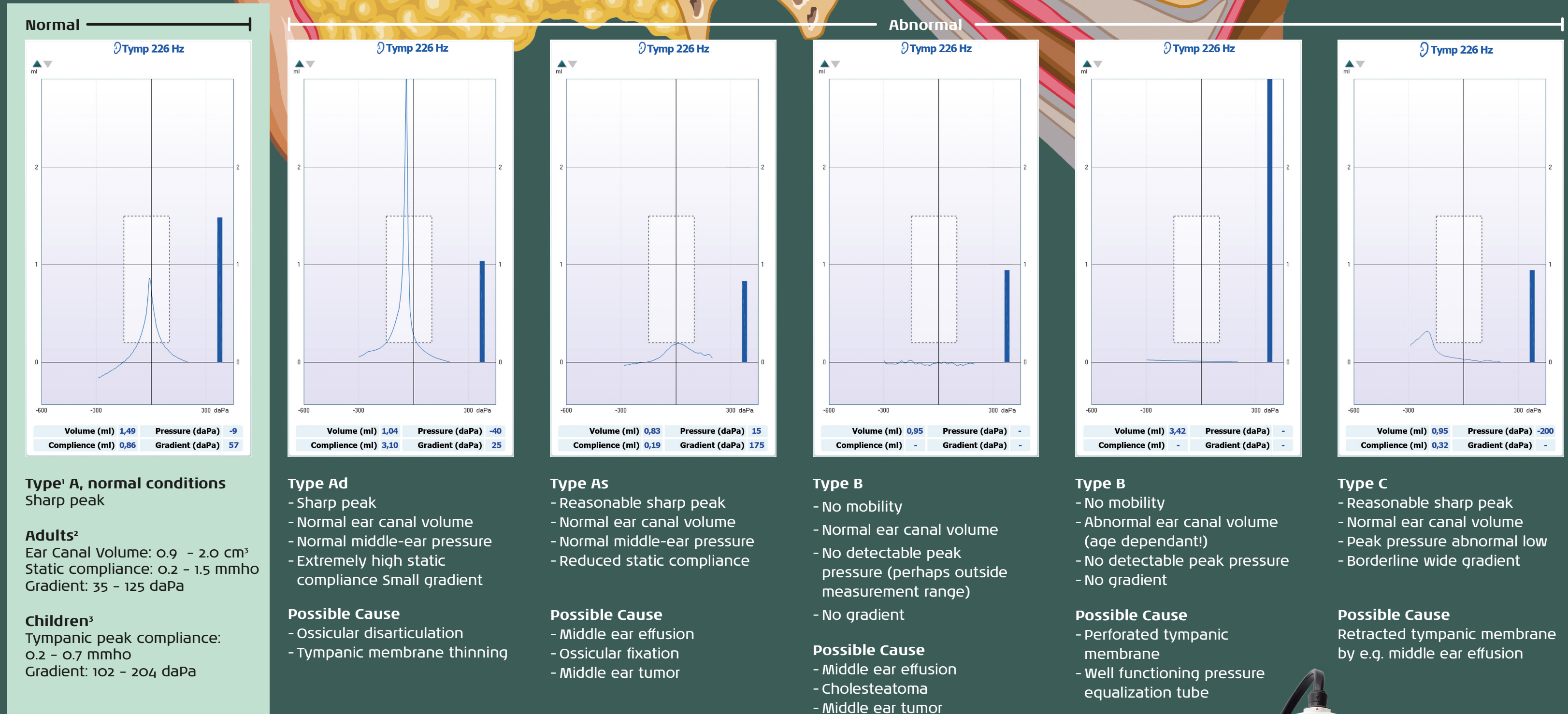
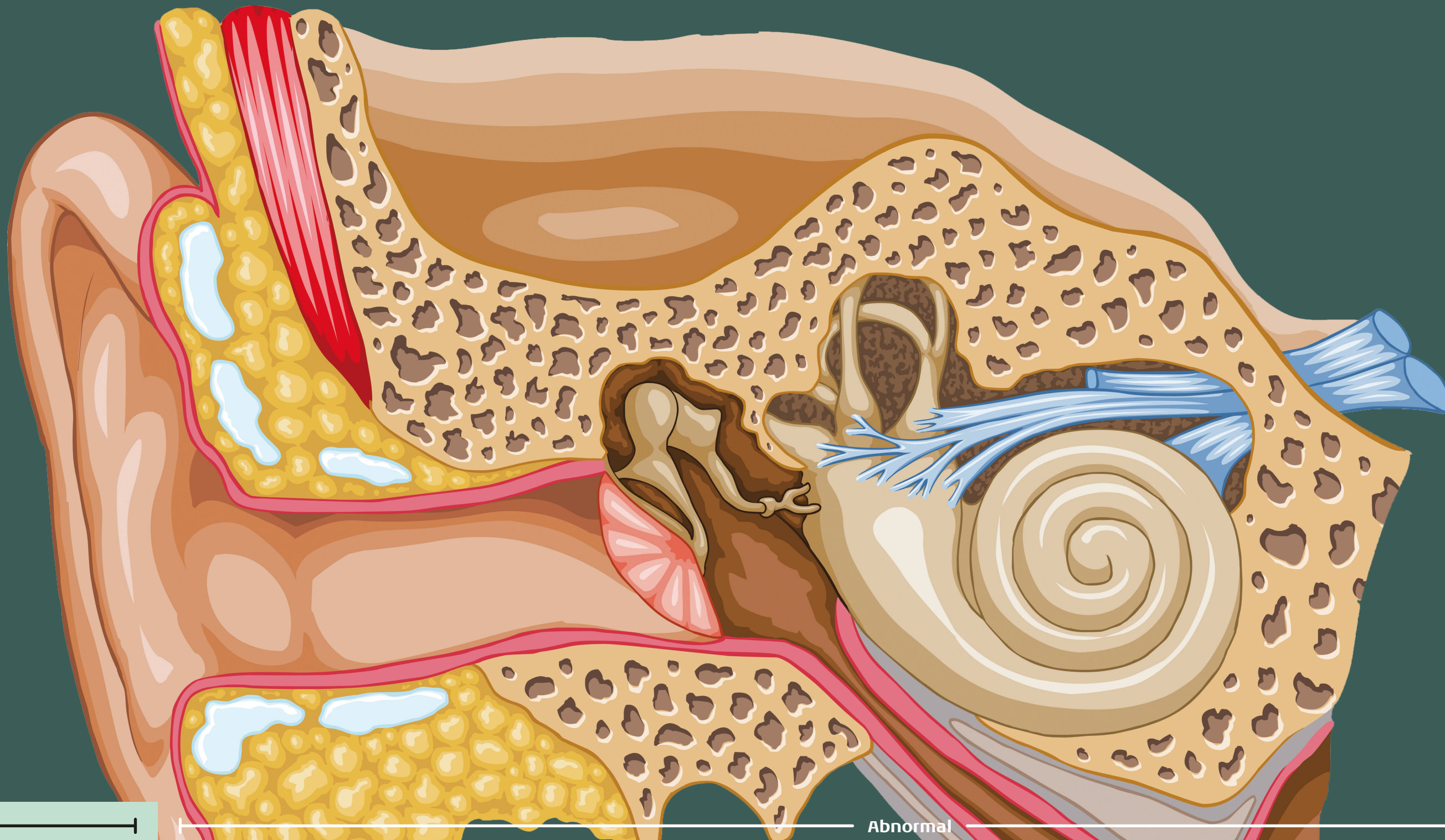


Science made smarter

Interacoustics Tympanometric results



The Interacoustics Titan, AT235, AA222, and MT10 middle ear analyzers provide objective analysis of the middle ear functions.

The measurements shown are from Titan with a 226 Hz probe tone.

For infants (up to 4 months) it is strongly recommended to use a 1000 Hz probe tone for tympanometry.

¹ Type indications as proposed by Jerger, 1970.

² Data indicate the 90% range by Wiley et al. 1996 as published in the Handbook of Clinical Audiology, sixth edition by Katz et al. 2009.

³ Data indicate the 90% range by Roush et al. 1995 as published in the Handbook of Clinical Audiology, sixth edition by Katz et al. 2009.



Interacoustics

Audiometry

Tympanometry

ABR

OAE

Hearing Aid Fitting

Balance

© Interacoustics AB - 4012017 - 5 - 06/2019